



Looking Toward Normal:

A LIVE Q&A FOCUSED ON GETTING EMPLOYEES BACK TO WORK

Event

[GoToWebinar](#)

5.13.20

11:00am PDT – 12:00 pm PDT

Top safety protocols and employment issues to consider when your organization begins to transition back into the workspace as pandemic restrictions lift.

Fisher Phillips partners Todd Scherwin and Lonnie Giamela will join Bolton & Co's Jeannie DeLauro and Carly Alba to answer your questions on the best practices and steps to take when you prepare to bring your employees back to work.

You can [submit your question for our panel in advance of the webinar here](#).

About the Panel:

Moderator: Jeannie DeLauro, CAWC, *Senior Vice President, Bolton & Company*

Jeannie works closely with her clients to assist in effectively managing their risk exposures, and provides them with valuable resources including claims management, education, safety training and cost reduction.

Panelist: Stefanie Nobriga, CAE, CEAS, *Safety & Health Manager, Bolton & Company*

Stefanie has been a loss control consultant for over 25 years specializing in ergonomics and wellness. She has extensive experience with the hotel industry, machine shops and guarding, corrugated box manufacturing, restaurants, schools and office setting.

Panelist: Laurie Flores, ABCP, *Safety & Health Professional, Bolton & Company*

Laurie provides business continuity consulting and a range of loss control services with more than 17 years of industrial safety expertise specializing in ergonomics. She identifies exposures and provides solutions to reduce risk, and provides training to employers and employees to help reduce work-related injuries.

Panelist: Todd B. Scherwin, *Regional Managing Partner, Fisher Phillips*

Todd Scherwin, regional managing partner of the Los Angeles and Woodland Hills offices, represents local and national employers on a full spectrum of labor and employment matters. He

both litigates on behalf of employers and regularly counsels businesses on a range of employment matters. Todd's litigation practice involves a range of disputes, including Private Attorney General Act (PAGA) actions and class actions, employment discrimination, harassment, retaliation claims, and trade secret litigation.

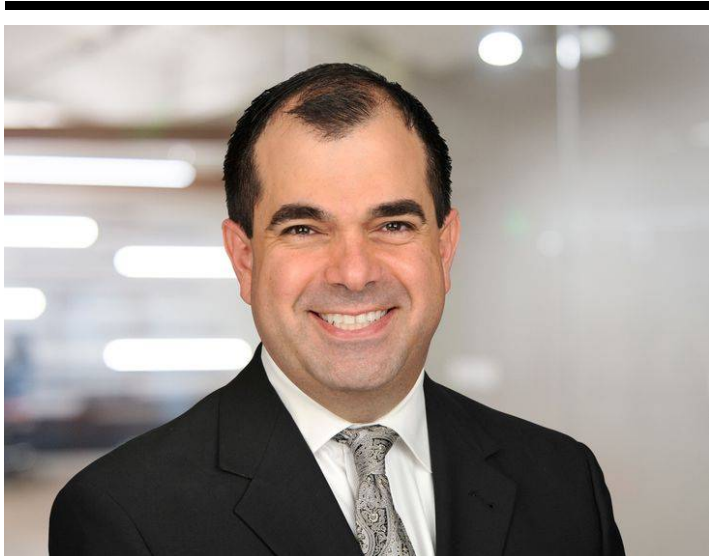
Panelist: Lonnie D. Giamela, *Partner, Fisher Phillips*

Lonnie Giamela represents a broad range of clients, from small businesses to national companies, in all sectors of manufacturing, retail, wholesale distribution, hospitality, education and the automotive industries. Lonnie has handled a full range of labor and employment matters, from single plaintiff to multi-plaintiff, in both federal and state courts in California, the California Court of Appeals, the California Supreme Court and the Ninth Circuit Court of Appeals. He is a member of the firm's COVID-19 Taskforce, a cross-disciplinary team of attorneys dedicated to advising employers on the many workplace law aspects of the global coronavirus pandemic.

[Register here](#)

For questions, please contact Sidra Trajcevska at strajcevska@fisherphillips.com.

Related People

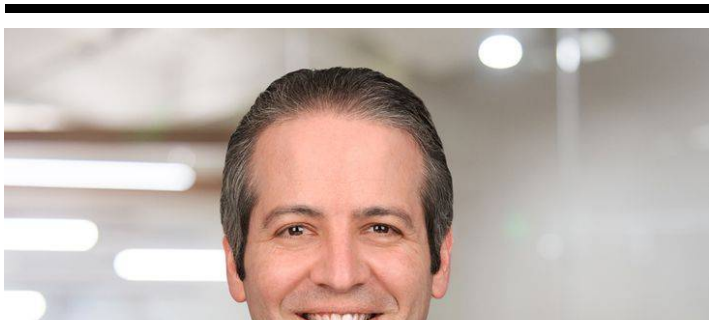


Lonnie D. Giamela

Partner

213.330.4454

Email





Todd B. Scherwin
Regional Managing Partner
213.330.4450
[Email](#)