



Hot Topics In Employment Law – Annual New Jersey Seminar

Event

Hilton Short Hills

41 John F. Kennedy Parkway

Short Hills, NJ 07078

5.18.17

1:00 PM - 5:00 PM

75

The current political and social landscape seems more polarized than at any point in recent history. Conflicting ideologies fuel a disjointed approach to legislation, regulation, and enforcement, leaving many organizations unsure about how to move their businesses forward. This is especially true as it relates to questions of legal compliance and decisions that impact the workforce and workplace.

Do you have a firm grasp of your responsibilities across the spectrum of employment law? Are you informed, and prepared to adopt an assertive posture in these unsettled times?

Join Fisher Phillips for a half-day employment law seminar designed to provide balanced information and practical solutions to some of the most important issues employers face.

Presentation topics will feature a forward-looking perspective on employment challenges brought on by this environment of uncertainty. Topics will include:

- The Trump Administration: A Review Of The First 100 Days And What They Suggest Going Forward
- Breaking The Glass Ceiling: Preparing For Evolving Pay Equity Mandates
- Immigration Compliance Under the Trump Administration: What Every Employer Needs to Know
- Keeping Up With Current Developments In New Jersey Labor And Employment Law – Recent Decisions And Their Impact On Your Business
- The Lightning Round: Key Issues Keeping You Up At Night

Cost: The cost of the seminar is **\$75 per person.**

Onsite registration begins at 12:30 p.m.

**This program is pending for HRCI / SHRM Preferred and Continuing Legal Education Credit.*

If you have any questions please contact Chris McGoldrick at (617) 532-9324 or cmcgoldrick@fisherphillips.com.

Related People



Phillip C. Bauknight

Partner

908.516.1059

Email





Kathleen McLeod Caminiti

Partner and Co-Chair, Wage and Hour Practice Group

908.516.1062

Email



Christopher J. Capone

Partner

908.516.1050

Email





Jessica T. Cook

Partner

404.240.4151

Email



Rosemary S. Gousman

Partner

908.516.1060

Email

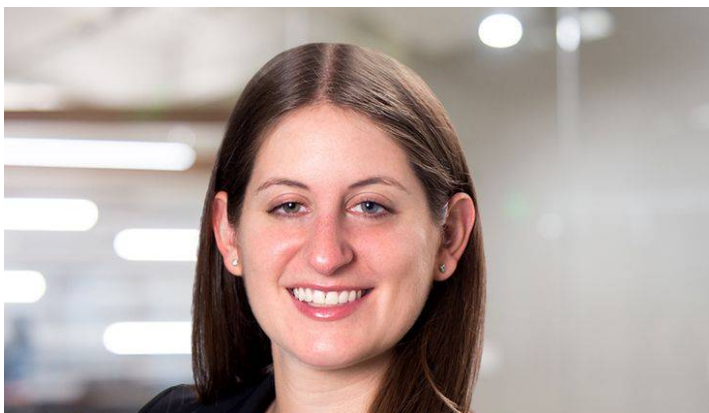




David B. Lichtenberg
Regional Managing Partner
908.516.1056
Email



Colleen P. Tandy
Partner
908.516.1057
Email





Sarah Wieselthier

Partner

908.516.1064

Email

Related Offices

New Jersey