



# Old Employment Laws Impacting the Workforce In New Ways

TAMPA BREAKFAST BRIEFING

## Event

Bank of America Plaza

101 Kennedy Blvd.

Tampa, FL 33602

12.08.16

7:30 AM - 9:00AM

25

This interactive workshop will outline practical strategies for dealing with the top workforce concerns of employers. The session will cover how existing employment laws through regulation and case law development have taken a turn and now impact the workforce in new and often unanticipated ways. The session will offer strategies for avoiding liability while, at the same time, maintaining positive employee relations. Among others, this session will address new anti-retaliation, leave, sexual orientation, wage-hour, and background check claims and regulatory investigations.

## Agenda:

7:30 a.m. – 8:00 a.m.

*Breakfast and Networking*

8:00 a.m. – 9:00 a.m.

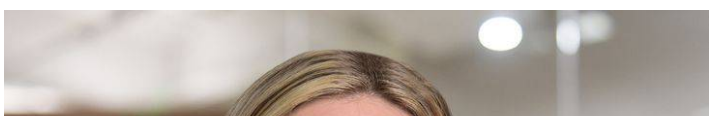
*Presentation*

**Cost:** \$25

**Questions?** Contact Elizabeth Hickman at [ehickman@fisherphillips.com](mailto:ehickman@fisherphillips.com) or (954) 847-4713

*\*\*This briefing has been approved for SHRM and HRCI credits.*

## Related People





**Lisa A. McGlynn**

Partner

813.769.7518

Email

## ***Related Offices***

Fort Lauderdale