



The Fine Art of Employment Law: From Compliance to the Courtroom

ONE DAY, MANY SOLUTIONS ATLANTA

Event

Woodruff Arts Center
1280 Peachtree St NE
Atlanta, GA 30309

3.22.16

The Fine Art of Employment Law: From Compliance to the Courtroom *One Day, Many Solutions Atlanta*

Joins us for The Fine Art of Employment Law: From Compliance to the Courtroom, an all-day HRCI/SHRM and CLE seminar and mock trial.

This year, Fisher Phillips' annual seminar is artfully crafted to answer attendees' questions pertaining to all things labor and employment law.

Sessions include:

- Art Imitating Life: From Termination to Trial—Painting the Picture with a Mock Trial
- Surrealism: The Strange World of Immigration-related Governmental Audits
- The Ancient Arts: The FLSA in the 21st Century
- Sculpting a Process for Whistleblower & Retaliation Claims
- Preparing Your Palette: Covering the Latest in Employee Benefits
- Apprenticing with the Masters: Roundtable Discussions
- From Classical to Contemporary: Ethics for Today's Lawyer

Cost:

1 attendee = \$165/each

2 or more attendees from the same company = \$145/each

If you have any questions please contact Katherine Flynn at (404) 760-7987 or

kflynn@fisherphillips.com

seminars.fisherphillips.com.

***Six hours of HRCI/SHRM and GA Bar CLE credit (including one hour of ethics) pending approval.*

Attachments

Wage - Hour Presentation

OSHA Presentation

Compliance Presentation

Immigration Presentation

Ethics Presentation

Related People

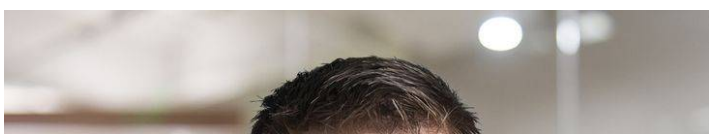


D. Albert Brannen

Partner

404.240.4235

Email





Michael P. Elkon
Partner
404.240.5849
Email



Edwin G. Foulke, Jr.
Partner
404.240.4273
Email





Corey J. Goerd
Director of Pro Bono & Community Engagement
404.240.4212
Email



Lorie Maring
Partner
404.240.4225
Email





Tracy L. Moon, Jr.
Partner
404.240.4246
Email



Thomas Paul Rebel
Senior Counsel
404.240.4255
Email





Andria Lure Ryan

Partner

404.240.4219

Email



Matthew R. Simpson

Partner

404.240.4221

Email





Joshua H. Viau
Co-Regional Managing Partner
404.240.4269
Email



Cynthia J. Yarbrough
Partner
404.240.5845
Email