



18th Annual Employment Law Symposium

Event

Brooklake Country Club

139 Brooklake Rd.

Florham Park, NJ 07932

7.31.25

8:30 AM — 4:30 PM EDT

Cost:

\$150 for SHRM Members

\$180 for Non-Members

Register for Event

Fisher Phillips invites you to join us for the 18th Annual Employment Law Symposium. This comprehensive one-day event, presented in collaboration with Morris County SHRM, offers an excellent opportunity to stay current on critical employment law issues while connecting with colleagues.

The symposium will cover a range of timely topics, including:

- 2025 federal and New Jersey labor & employment law updates
- Immigration law updates
- Navigating employee leave requests
- The overlap of the National Labor Relations Act and other employment laws
- OSHA whistleblower retaliation claims, the process, and best practices
- NJ independent contractor misclassification issues

This program is pending approval for SHRM/HRCI credits and CLE credit by the New Jersey Supreme Court Board on Continuing Legal Education.

Don't miss this chance to enhance your knowledge, network with your peers, and enjoy Brooklake Country Club. Early registration is encouraged to secure your spot at this valuable event.

As this event is sponsored by Fisher Phillips and Morris County SHRM, the RSVP list and information provided at registration will be shared among both sponsors. By registering for this event, you understand you may be contacted by each sponsor.

Online registration is available until 4:00 PM on July 28, 2025. Secure your spot early to avoid the additional \$15 fee for on-site registration.

If you have any questions, please contact **Stacey Higgins**.

*Fisher Phillips is committed to providing access to all of our events for disabled attendees. If you need an accommodation to participate in this event, please give us three business days advance notice prior to the scheduled event by contacting **Stacey Higgins**. Thank you.*

Related People



Alba V. Aviles

Partner

908.516.1058

Email





Phillip C. Bauknight

Partner

908.516.1059

[Email](#)

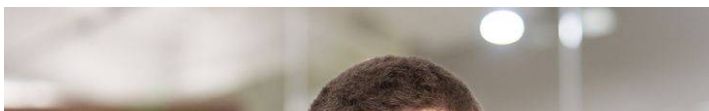


Amy Canning

Of Counsel

908.516.1025

[Email](#)





Rob Dickson

Associate

908.516.1029

Email



Annamaria Del Buono

Associate

908.516.1033

Email





R. Shane Kagan

Partner

908.516.1069

Email



David Kass

Associate

908.516.1022

Email

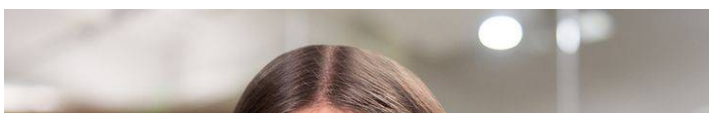


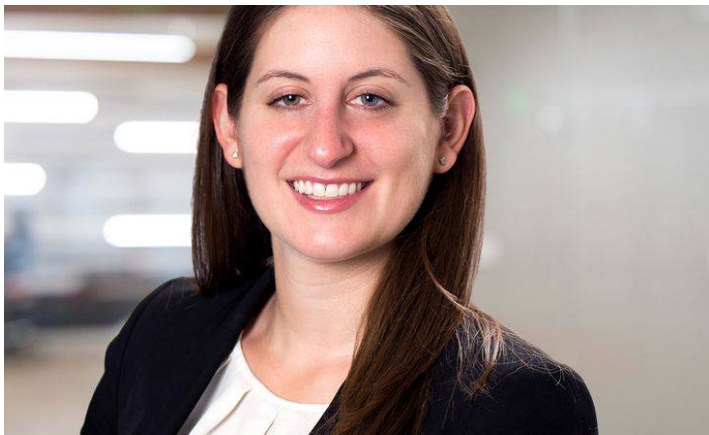


David B. Lichtenberg
Regional Managing Partner
908.516.1056
Email



Kate Mize
Associate
Email





Sarah Wieselthier

Partner

908.516.1064

Email

Service Focus

Counseling and Advice

Related Offices

New Jersey