



Fisher Phillips Expands International Offerings with Global Mobility Team

News

9.16.24

Fisher Phillips, an international labor and employment law firm representing employers, is pleased to announce the launch of the firm's Global Mobility team, a sub-practice of the firm's growing International Practice Group and Immigration Practice Group. The team is led by **Nan Sato**, a partner in the firm's Philadelphia office and co-chair of the firm's International Practice Group.

The Global Mobility team helps employers navigate complex international labor laws, compliance issues, and the logistics of remote or hybrid work arrangements. With extensive experience in global mobility, the team counsels employers seeking immigration and Visa support, international legal compliance, and strategic mobility planning. The team helps clients create remote and hybrid work solutions that work across different jurisdictions. By working closely with U.S. and international employees, managers, and external partners, the team provides tailored solutions that align with global organizational business goals. Fisher Phillips leverages its team of attorneys in the U.S. and Mexico to help clients navigate changing workplace laws around the world.

Regarding the Global Mobility team launch, **William Wright**, Head of Fisher Phillips' Global Strategies, noted, "The establishment of this task force further expands the breadth of our international capabilities to serve our clients worldwide." **Nan** added: "In today's evolving global work landscape, the rise of remote and hybrid work is pushing the boundaries of where employers have and hire employees. The ability to tap into a worldwide talent pool allows organizations to access diverse skills and perspectives but also comes with the complexity of navigating international labor laws. We are seeing a growing demand for assistance at this intersection and our Global Mobility team will help our clients meet those needs."

Jocelyn Campanaro, Co-Chair of Fisher Phillips' Immigration Practice Group added: "By leveraging our Immigration and International teams, we are uniquely positioned to help employers worldwide thrive and grow while complying with the vastly different laws that govern the workplace. Our combined experience will help give clients the reassurance they need to build their global workforces."

Please click [here](#) to learn more about Fisher Phillips' Global Mobility practice.

Please reach out to our [Media team](#) for any news inquiries.

Related People



Nan Sato, CIPP/E, CIPP/C

Partner

610.230.2148

Email

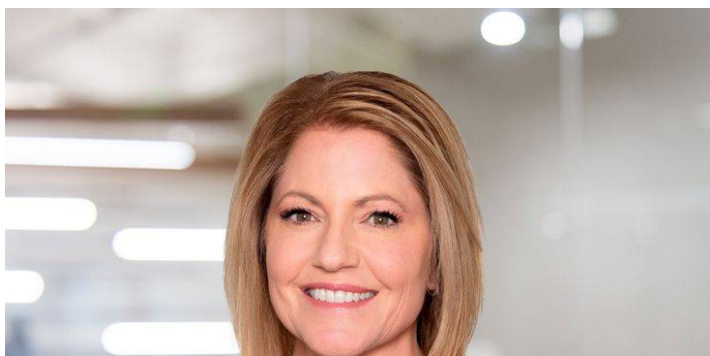


William D. Wright

Partner

610.230.2137

Email





Jocelyn Campanaro

Partner

303.218.3667

Email

Service Focus

Global Mobility

Immigration

International