



Strategies for Enhancing Employee Retention and Engagement in the Hospitality Sector

Event

5.13.24

2:00 PM — 3:00 PM EDT

\$35 per person

Rediscover the fundamentals of employee engagement to rejuvenate your hospitality workforce and cultivate a thriving workplace atmosphere. Join Fisher Phillips partners Courtney Leyes and Emily Litzinger, alongside Katherine Baron from the Work Institute, for an enriching webinar. Together, they will explore strategies for establishing a robust employee relations framework that nurtures lasting loyalty, trust, and mutual value within direct working relationships.

Attendees will gain insights into:

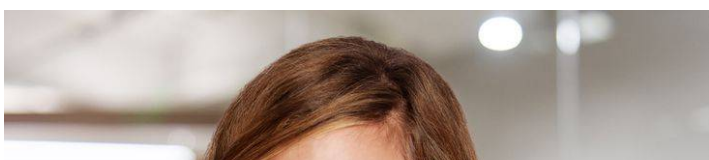
- Why your employees are not staying?
- The cost of turnover.
- Critical workplace elements to retain employees.
- How to build a sustainable employee relations infrastructure that instills lasting loyalty, trust, and value in direct working relationships.

The firm will submit this program for HRCI and SHRM credit.

If you have any questions, please contact **Elizabeth Hickman**.

*Fisher Phillips is committed to providing access to all of our events for disabled attendees. Automated closed captioning is available for all of our webinars. For other accommodation inquiries, please give us three business days advance notice prior to the scheduled event by contacting **Elizabeth Hickman**. Thank you.*

Related People





Courtney Leyes

Partner

615.488.2902

Email



Emily N. Litzinger

Partner

502.561.3978

Email

Industry Focus

Hospitality