



Hospitality Partners Address What QSRs Can Do to Deal with Workplace Romances

Publication

2.09.24

Partners **Courtney Leyes** and **Emily Litzinger** co-authored the eleventh installment of their *QSR Magazine* column addressing employment law questions specific to the restaurant industry. In this article, the hospitality gurus discuss tips for QSR employers to help mitigate potential risks associated with workplace romances.

To read the article visit [QSR Magazine](#).

Related People

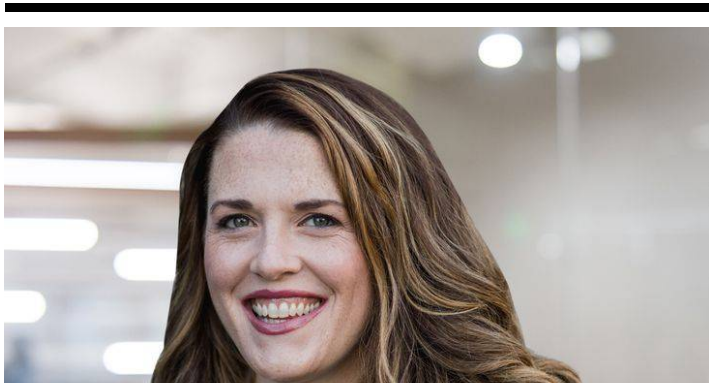


Courtney Leyes

Partner

615.488.2902

Email





Emily N. Litzinger

Partner

502.561.3978

Email

Service Focus

Employment Discrimination and Harassment

Industry Focus

Hospitality

Related Offices

Memphis

Nashville

Gulfport

Louisville