



## Fisher Phillips Welcomes Martha G. Vázquez in Louisville

News

12.07.23

Fisher Phillips, an international labor and employment law firm representing employers, is pleased to announce that **Martha G. Vázquez** has joined the firm as an associate in the Louisville office.

Before joining Fisher Phillips, Martha served as Senior Counsel for a technology company. In this role, Martha advised on all aspects of employee relations and management, developed employment policies and training materials, drafted employment and independent contractor agreements, and handled compliance issues associated with various federal and state employment laws. Prior to her in-house role, Martha was an associate at a law firm in Washington, D.C. where she represented companies throughout all aspects of employment-related disputes including trade secrets and unfair competition and administrative proceedings before the EEOC and OFCCP.

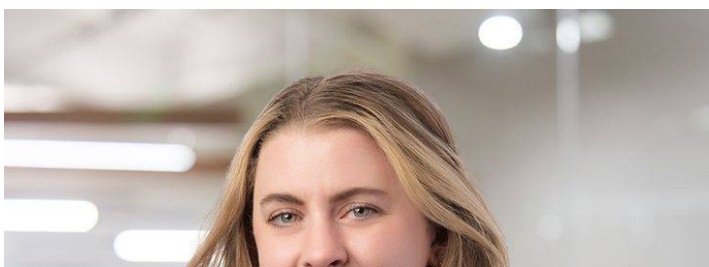
At Fisher Phillips, Martha will continue her work on behalf of companies by providing legal counsel and advice on all aspects of their employment relationships. She will work with business leaders to formulate and implement strategies to minimize risk while counseling on their most sensitive matters including terminations, contract negotiations, and litigation strategy.

Martha earned her J.D., *magna cum laude* and Order of the Coif, from Washington & Lee School of Law. During law school, she served as the Managing Online Editor, for the *Washington & Lee Law Review* and as a judicial extern for the Honorable Judge Joel C. Hoppe of the U.S. District Court for the Western District of Virginia, and the Honorable Judge Robert R. Rigsby of the Superior Court of the District of Columbia. Martha earned her B.A. from the University of Pittsburgh and her M.A. from Royal Holloway University of London.

---

Please reach out to our [Media team](#) for any news inquiries.

### ***Related People***





**Martha G. Vázquez**

Associate

502.410.6889

Email

## ***Related Offices***

Louisville