



## Fisher Phillips Expands Columbia, South Carolina Office with Arrival of Erin Anderson

### News

Fisher Phillips, one of the country's preeminent labor and employment law firms representing employers, is pleased to announce that **Erin Anderson** has joined the firm as an associate in the Columbia, South Carolina office.

Before joining Fisher Phillips, Erin was at a South Carolina-based law firm where she represented employers in a wide variety of matters in state and federal court and before the South Carolina Human Affairs Commission and the Equal Employment Opportunity Commission. She also defended employers throughout U.S. Department of Labor investigations and advised them on compliance with federal and state employment laws and agency regulations. At Fisher Phillips, Erin will continue representing employers in workplace law disputes and will also provide companies with counseling and advice on all aspects of their employment relationships.

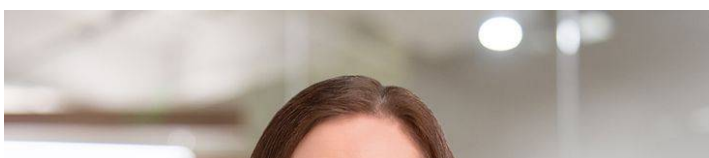
Erin's arrival comes on the heels of another new associate – **Aaron Wallace** – who [joined the Columbia office earlier this month](#).

Erin earned her J.D., *magna cum laude*, from the University of South Carolina School of Law, where she served as Associate Editor-in-Chief of the *South Carolina Law Review*. During law school, she was a member of the Order of the Wig and Robe and the Order of the Coif and received CALI Awards in Legal Writing and Research, Advanced Legal Writing, Labor Law, and Alternative Dispute Resolution in Employment Law Workshop. She also served as a research assistant in which she explored employment law topics related to the gig economy and discrimination. Erin graduated with a B.A. from the University of South Carolina and worked for several years in the marketing and advertising industry before attending law school.

---

Please reach out to our [Media team](#) for any news inquiries.

### ***Related People***





**Erin Waldron Anderson**

Associate

803.740.7692

Email

***Related Offices***

Columbia