



# Pittsburgh CLE Series – Whistleblowers in the Workplace: An Overview of the Law and Best Practices for Employers

Event

2.16.23

12:00 PM — 1:00 PM EDT

Addressing employee concerns is essential to promoting a healthy and productive work environment. If concerns are not addressed, however, employers not only put their workplace at risk but also open themselves to potential legal consequences. Employers face a variety of whistleblower laws depending on their industry and location. But there are common elements among all whistleblower provisions. This presentation will provide an overview of whistleblower law including the similarities and differences employers may encounter. It will also include a discussion of best practices that may apply regardless of industry or location.

If you have any questions, please contact **Donna Kearney**.

---

## Educational Credits

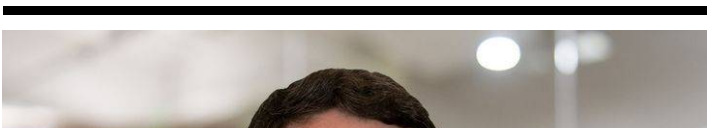
- **HRCI and SHRM**
  - The firm is submitting this webinar for credit.
- **CLE**

The firm will make all reasonable efforts to obtain CLE credit for this program in every state that is relevant to attendee's MCLE needs. In certain instances, some programs may not be awarded CLE credit because of content, delivery or jurisdictional restrictions.

---

*Fisher Phillips is committed to providing access to all of our events for disabled attendees. Automated closed captioning is available for all of our webinars. For other accommodation inquiries, please give us three business days advance notice prior to the scheduled event by contacting **Donna Kearney**. Thank you.*

## Related People





**Arthur M. Wolfson**

Partner

412.822.6625

Email

***Service Focus***

Workplace Safety and Catastrophe Management

***Related Offices***

Pittsburgh