



## Portland Attorneys Examine Workplace Romance Pitfalls

Publication

2.11.20

In their timely article for *Oregon Business* titled “The Pitfalls of Workplace Romance in the Post-#MeToo Era,” Portland Regional Managing Partner Clarence Belnavis and Associate Alexander A. Wheatley look at the topic of workplace romance in advance of Valentine’s Day. They warn that office romances, while common, can be a huge distraction. Clarence and Alex review several recent studies that identify workers’ and employers’ stances on office romance, and they encourage employers to find the right balance when developing and implementing policies.

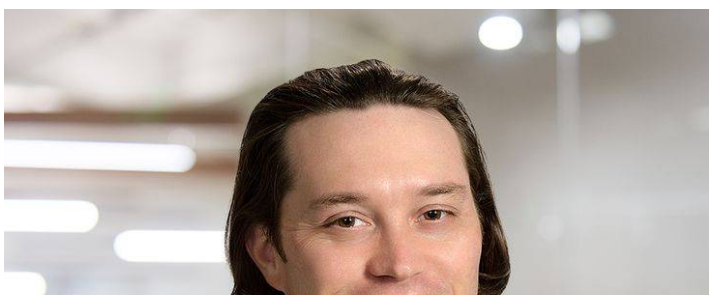
To read the full article, visit [\*Oregon Business\*](#).

### ***Related People***

---



**Clarence M. Belnavis**  
Regional Managing Partner  
503.205.8045  
Email





**Alexander A. Wheatley**  
Partner  
503.205.8054  
Email

***Related Offices***

Portland