



2022 Midwest Labor & Employment Seminar

Event

Overland Park Convention Center
6000 College Blvd.
Overland Park, KS 66211

10.28.22

9:00 AM — 5:00 PM CDT

\$75 per person

Please join us for our annual labor and employment law seminar designed to provide timely information on hot topics in HR and employment law. We will provide practical solutions to some of the most important issues employers are facing in today's ever-changing workplace environment.

Seminar sessions will include:

Legal Update – This session will address key federal, Missouri and Kansas court decisions from the past year that affect employers, with lessons learned and best practices going forward.

Leave Law Trends – We will untangle the complex web of ADA, FMLA, and Workers Compensation and state leave law requirements.

Special Panel Discussion – Learn from a panel of guest experts the mistakes that many employers make in disciplining and terminating employees that end up costing them big money when a claim is filed.

Company Checkup – This session is designed to help you identify potential compliance risks with your current policies and practices – from recruiting, to pay practices, to leaves of absence – before they become critical.

Dealing with Controversial Workplace Topics – Topics to be covered include abortion, guns, domestic violence (Depp and Heard trial), politics, war, and more.

A reception will follow the seminar.

Fisher Phillips will donate 100% of the registration fees to a local children's charity. The charity will be selected by those in attendance for the seminar.

The firm is submitting this seminar for HRCI/SHRM credit. The course is also being submitted for MCLE in Kansas and Missouri, where this program meets approval criteria.

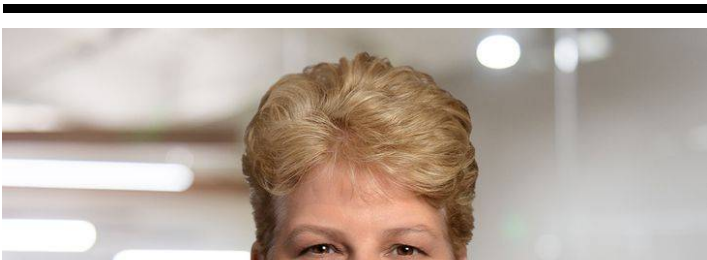
If you have any questions, please contact **Ashley Ollison**.

*Fisher Phillips is committed to providing access to all of our events for disabled attendees. If you need an accommodation to participate in this event, please give us three business days advance notice prior to the scheduled event by contacting **Ashley Ollison**. Thank you.*

Related People



James R. Holland, II
Regional Managing Partner
816.842.8770
Email





Melody L. Rayl

Partner

816.460.0201

Email



Laura Bailey Brown

Partner

816.460.0208

Email





Samantha J. Monsees

Partner

816.842.8770

Email



Lauren M. Sobaski

Partner

816.460.1237

Email

Related Offices

Kansas City