



2021 Midwest Labor & Employment Law Seminar

Event

Overland Park Convention Center

6000 College Blvd.

Overland Park, KS 66211

11.12.21

9:30 AM — 3:30 PM CDT

Cost: \$75 per person

Fisher Phillips will donate 100% of the registration fees to a local children's charity. The charity will be selected by those in attendance for the seminar.

Please join us for our annual labor and employment law seminar designed to provide timely information on hot topics in HR and employment law. We will provide practical solutions to some of the most important issues employers are facing in today's ever-changing workplace environment.

Agenda:

9:30 – 10:00 | Registration

10:00 – 11:15 | Are Pants Required? Managing the Modern Virtual Workforce and Employee Online Behavior

We all know the modern workforce is more virtual and online than ever before. Virtual meetings are here to stay and social media platforms have replaced the traditional office water cooler, where employees now flock virtually to express their opinions, views and complaints. This session will cover helpful tips for businesses on how to manage employees' online behavior, modernize employment policies, and legally enforce your workplace rules in a variety of virtual settings.

11:15 – 12:15 | Election 2020 Update – The Labor and Employment Landscape One Year Later

It's been just one year since the election, but what a year it has been!!! This session will cover the changes made by the Biden administration (and the anticipated changes on the horizon) in the labor and employment arena and the potential impact on your business.

12:15 – 12:30 | Break

12:30 – 1:15 | Lunch Presentation: Tips for Attracting and Recruiting Employees in the Modern Workplace

A panel of recruiters and headhunters will discuss current recruiting struggles that every employer is facing – labor shortages, creative benefits, remote work requests, among others. Bring your questions to discuss the tricks of the recruiting trade from this panel of experts.

1:15 – 1:30 | Break

1:30 – 2:30 | It's a Whole New World! The Creation of COVID-19 Litigation in the Workplace

COVID-19 was declared a global pandemic less than 20 months ago – which is just enough time to create a whole new set of litigation risks for employers. This session will provide you with an overview of this new wave of litigation the latest lawsuit trends and practical advice on how to prevent your company from becoming the next victim of this unprecedented legal pandemic.

2:30 – 3:25 | Who Wants to be an Employment Law Star?

It's time to test your knowledge! This interactive and fun-filled session will examine the myriad of employment law topics affecting businesses and human resource professionals and reveal how prepared you are for common – and uncommon – workplace issues.

3:25 – 3:30 | Closing Remarks and Adjourn

This program is pending approval for 5 hours of HRCI/SHRM credits and Continuing Legal Education credit in Kansas and Missouri.

If you have any questions, please contact **[Rainatu Conteh](#)**.

*Fisher Phillips is committed to providing access to all of our events for disabled attendees. If you need an accommodation to participate in this event, please give us three business days advance notice prior to the scheduled event by contacting **[Rainatu Conteh](#)**. Thank you.*

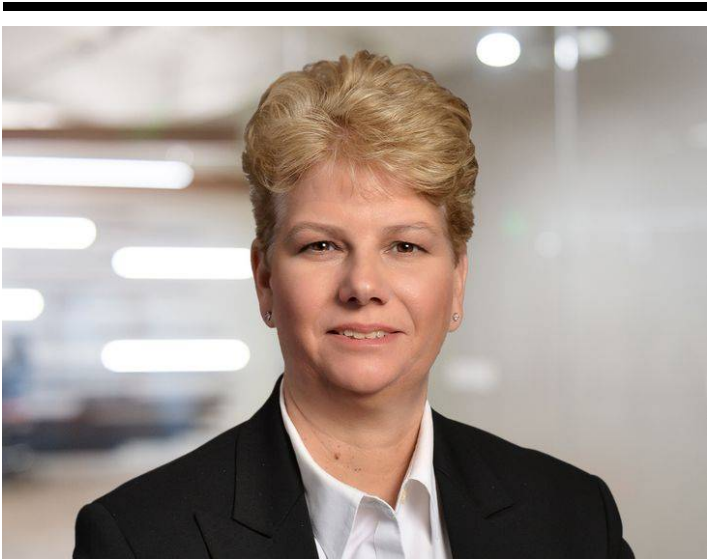
Related People





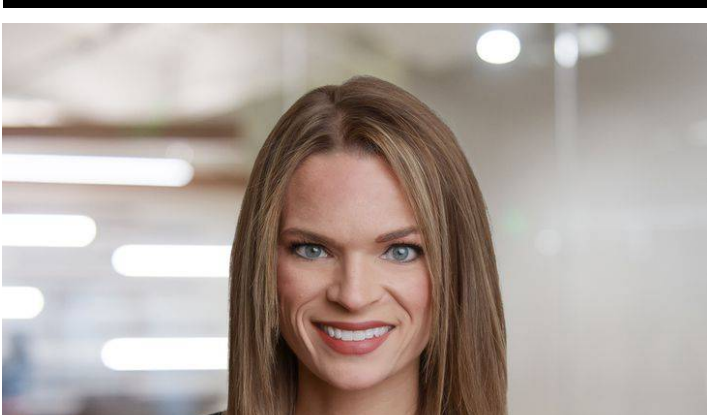
Lauren M. Sobaski

Partner
816.460.1237
Email



Melody L. Rayl

Partner
816.460.0201
Email





Laura Bailey Brown

Partner

816.460.0208

Email



Samantha J. Monsees

Partner

816.842.8770

Email

Related Offices

Kansas City