



Lunch N Learn – How to “Return to Work” without an HR Headache: Key Legal Issues California Employers Need to Consider

Event

6.09.21

12:00 PM — 1:00 PM PDT

As employers and their employees gear up for the anticipated June 15th reopening of California, there are crucial legal issues impacting California employers that must be considered when bringing employees back to the workplace. In this program, attorneys **Lonnie D. Giamela** of the Los Angeles and Irvine offices and **Hannah Sweiss** of the Los Angeles and Woodland Hills offices will update you on these important legal considerations. Attendees will walk away with actionable steps to prepare and update their policies and procedures to get their employees ready for returning to the workplace and more.

For questions, please email [**Marisa Nguyen**](#).

This event has been approved for 1 hour of HRCI/SHRM credit.

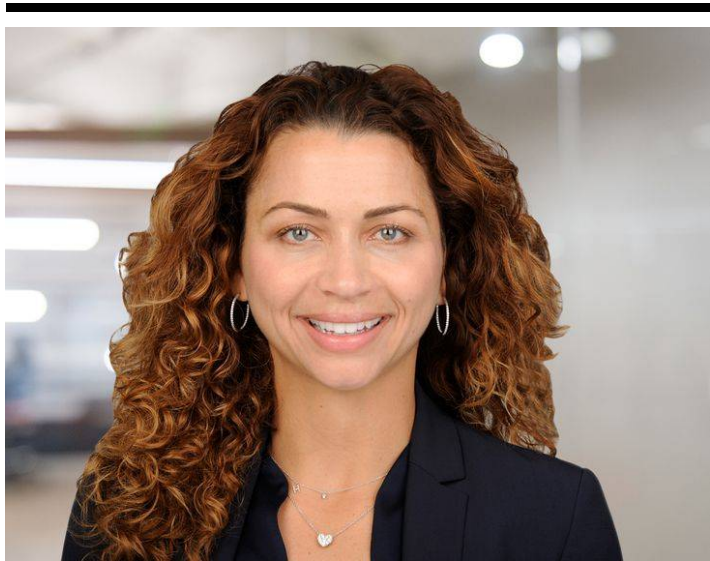
*Fisher Phillips is committed to providing access to all of our events for disabled attendees. If you need an accommodation to participate in this event, please give us three business days advance notice prior to the scheduled event by contacting [**Marisa Nguyen**](#). Thank you.*

Related People





Lonnie D. Giamela
Partner
213.330.4454
[Email](#)



Hannah Sweiss
Partner

818.230.4255
[Email](#)

Related Offices

- Irvine
- Los Angeles
- Sacramento
- San Diego
- San Francisco
- Woodland Hills