



## Fisher Phillips Expands California Footprint

FIRM CELEBRATES 30 YEARS OF GROWTH IN CALIFORNIA WITH LAUNCH OF SIXTH OFFICE IN THE STATE

News

7.14.20

**WOODLAND HILLS, CA (July 14, 2020)** – Fisher Phillips, one of the country’s preeminent labor and employment law firms representing employers, announces the expansion of its California footprint with the official launch of an office in Woodland Hills. The new Woodland Hills office is the firm’s sixth in California along with five other locations in Irvine, Los Angeles, Sacramento, San Diego and San Francisco.

Fisher Phillips has been operating in Southern California for thirty years after establishing its first outpost in Irvine in 1990. Since that time, the firm has experienced explosive growth with over 130 attorneys stationed across the state to help employers navigate California’s changing workplace laws and increased risk of litigation. The launch of the Woodland Hills office complements the firm’s longstanding presence across the state.

Todd Scherwin, who is the managing partner of the firm’s Los Angeles office, will serve as managing partner of the Woodland Hills office.

Of the opening, Scherwin said: “San Fernando Valley is home to a number of thriving industries, including, automotive, healthcare, hospitality, technology and manufacturing with growing litigation and employment counsel needs. By expanding our presence, we are ensuring that our clients across the region have quick access to our attorneys and the legal services they require to keep ahead of the rapidly changing laws that impact their business. Our Woodland Hills attorneys are already fully embedded in the Valley’s communities as trusted business advisors and serve as key resources to clients on workplace law issues, so this office is a natural fit for our firm’s growing California footprint. We are excited to be a part of this community, particularly in the Warner Center as it continues to be a thriving business area and expect to grow Fisher Phillips’ presence in the Valley over the next few years.”

Fisher Phillips has already started growing its bench of attorneys in the San Fernando Valley, and in October announced the addition of two litigation partners, Nicole Golob Minkow and Nicole Kamm, and one associate, Hannah Sweiss. The trio’s arrival was an important component of the firm’s plan to expand in the area with seasoned litigators and employment counselors who work with clients to develop preventive employment policies. Collectively, Golob Minkow, Kamm and Sweiss defend

clients across California against class, multi-plaintiff and single-plaintiff employment claims and provide strategic counsel on labor and employment issues that arise in the workplace.

More recently, the firm added Nazanin Afshar as an associate in Woodland Hills. Afshar represents employers across the Valley against individual and class actions and Private Attorneys General Act (PAGA) wage-and-hour disputes. She also defends clients against claims involving employment discrimination, wrongful termination, wage and hour violations, and retaliation. Afshar is fluent in several languages, including Farsi, French and Spanish. She received her J.D. and B.A. from the University of California and her L.L.M. from the University of Paris.

The firm's Woodland Hills address is:

21600 Oxnard Street  
Suite 650  
Woodland Hills, CA 91367

The opening of the Woodland Hills office continues the expansion of Fisher Phillips' national footprint over the past year. Earlier this year, the firm opened two new offices in Nashville and Detroit. In 2019, Fisher Phillips announced the opening of a second location in Washington, D.C. Metro with the addition of six attorneys and the entrance into Pittsburgh with the addition of an industry-leading mine and workplace safety team.

---

Please reach out to our [Media team](#) for any news inquiries.

### ***Related People***



**Nazanin Afshar**  
Partner  
818.230.4259  
[Email](#)



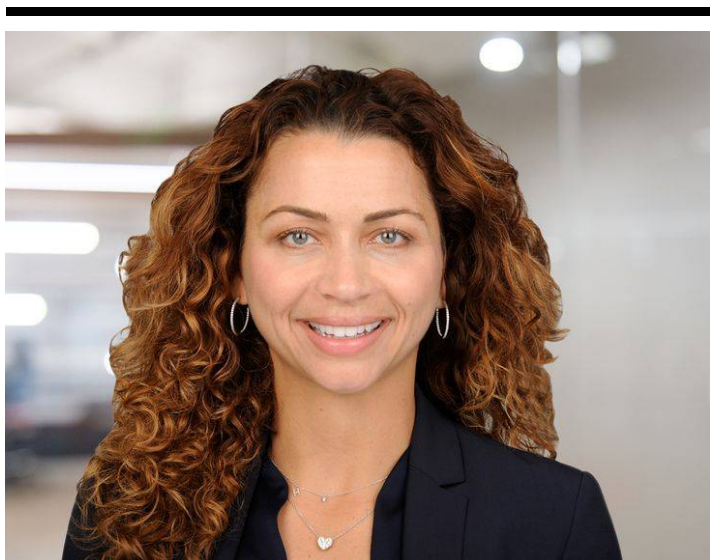
**Nicole Golob**  
Partner  
818.230.4254  
[Email](#)



**Nicole Kamm**  
Partner  
818.230.4253  
[Email](#)



**Todd B. Scherwin**  
Regional Managing Partner  
213.330.4450  
Email



**Hannah Sweiss**  
Partner  
818.230.4255  
Email

## ***Related Offices***

Woodland Hills