



Fisher Phillips Announces Practice Group and Industry Leaders Amid Record Growth

News
5.09.19

ATLANTA (May 9, 2019) – Fisher Phillips announces eleven Practice Group and Industry Team leaders. This follows a blockbuster year of growth as the firm continues to expand its labor and employment services across the U.S. The appointment of the eleven is a step in the firm’s plan to create and sharpen practice groups and industry teams to better meet client interests and needs.

In 2018, Fisher Phillips grew its attorney head count by 6.3 percent, nearly doubling its lawyer growth rate in 2017. The growth, felt across the firm’s U.S. offices, is fueled by national attention to workplace issues, including legislative and regulatory pushes at the state and local levels to address issues like sexual harassment in light of the #MeToo movement; pay equity and disparity; the use of medical and recreational marijuana; rapidly-changing wage and hour and wage payment laws; and paid leave laws. Fisher Phillips recently announced the expansion of the firm’s Washington, D.C. metro presence with the addition of six attorneys in January, as well as the opening of a Pittsburgh office and growth in Denver with an industry-leading workplace and mine safety team of six attorneys.

“As our firm continues to strategically align operations to best serve our clients, identifying and appointing respected professionals to steer our practice groups and industry teams will be critical to our firm’s continued success. These attorneys are established leaders at Fisher Phillips and demonstrate an unwavering commitment to their clients, colleagues, and community with a vested interest in the future direction of our firm,” said Fisher Phillips Chairman and Managing Partner Roger Quillen. “We anticipate and respond emphatically to our clients’ needs. That is why we continually re-evaluate ways to drive excellent client service. By coupling the capabilities of these and other practice groups and industry teams with the firm’s overall commitment to providing management-side representation on virtually any workplace issue, we are strategically situated for another year of rapid and thoughtful growth.”

Practice Group Leaders

California Litigation: Karl Lindegren (Irvine and Los Angeles) and Kristen Nesbit (Los Angeles)

Employee Benefits: Sheldon Blumling (Irvine)

Employee Defection and Trade Secrets: Christopher Stief (Philadelphia and Pittsburgh) and Robert Yonowitz (Irvine)

Global Immigration: Davis Bae (Seattle) and Shanon Stevenson (Atlanta)

Labor Relations: Steven Bernstein (Tampa) and Todd Lyon (Portland and Seattle)

Litigation: Todd Ewan (Philadelphia and Pittsburgh) and Suzanne Michael (Seattle)

Workplace Safety and Catastrophe Management: Todd Logsdon (Louisville) and Travis Vance (Charlotte)

Industry Team Leaders

Automobile Dealers: Christopher Hoffman (San Diego) and Matthew Simpson (Atlanta)

Financial Services: David Erb (Baltimore) and Rosemary Gousman (New Jersey)

Healthcare: Laurel Cornell (Louisville) and Kevin Troutman (Houston)

Hospitality: Andria Ryan (Atlanta) and Alden Parker (Sacramento and San Francisco)

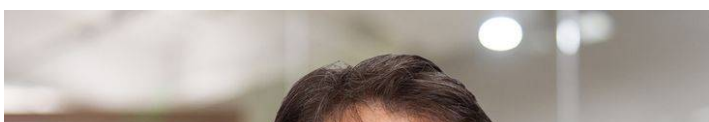
Manufacturing: David Kresser (Atlanta) and Stephen Mitchell (Columbia)

Please reach out to our [Media team](#) for any news inquiries.

Related People



Davis C. Bae
Regional Managing Partner
206.693.5060
[Email](#)





Steven M. Bernstein
Regional Managing Partner and Labor Relations Group Co-Chair
813.769.7513
Email



Sheldon J. Blumling
Partner
949.798.2127
Email



Laurel K. Cornell
Regional Managing Partner

502.561.3987
Email



David W. Erb
Partner
410.857.1399
Email



Todd Alan Ewan
Partner
410.857.1399

610.230.2140
Email



Rosemary S. Gousman
Partner
908.516.1060
Email



Christopher C. Hoffman
Regional Managing Partner

858.597.9610
Email



David R. Kresser
Partner
404.240.4208
Email



Karl R. Lindegren
Partner
313.551.0100

949.851.2424
Email



Todd B. Logsdon
Partner
502.561.3971
Email



Todd A. Lyon
Partner

503.205.8095

Email



Suzanne Kelly Michael

Partner

206.682.2308

Email



Stephen C. Mitchell

Regional Managing Partner

803.255.0000

Email



Kristen J. Nesbit

Co-Regional Managing Partner

213.330.4455

Email



Alden J. Parker

Regional Managing Partner

213.330.4455

916.210.0404
Email



Andria Lure Ryan
Partner
404.240.4219
Email



Matthew R. Simpson
Partner
916.210.0404

404.240.4221

Email



Shanon R. Stevenson

Partner

404.240.5842

Email



Christopher P. Stief

Regional Managing Partner

207.477.7007

Email



A. Kevin Troutman

Senior Counsel

713.292.5602

Email



Travis W. Vance

Regional Managing Partner

704.778.4164

Email



Robert Yonowitz

Partner

949.798.2113

Email

Service Focus

Employee Benefits and Tax

Employee Defection and Trade Secrets

Immigration

Labor Relations

Litigation and Trials

Workplace Safety and Catastrophe Management

Industry Focus

Automotive Dealership

Healthcare

Hospitality

